

COMMON CONDITIONS AND NEEDS OF CHILDREN ELIGIBLE

Cardiac Disease or Defects
Respiratory Disorders
Chronic Lung Disease
Tube Feedings
Colostomy Care
Feeding Disorders/Reflux
Genetic Disorders
Oncological/Hematological Disorders
Congenital Disorders
Failure to Thrive
Tracheostomy Care
Complications of Prematurity
Neurological Disorders
Dermatological Disorders
Infectious Processes
End-Stage Diseases
Orthopedic Conditions
Metabolic and Endocrine Disorders
Post-Operative Care
Post Traumatic Injuries
Burn Injury Rehabilitation
Fetal Alcohol Syndrome

Many other conditions qualify. Please call 769-242-0557 for more information.

Transportation is available to and from our facility daily.


HOURS OF OPERATION

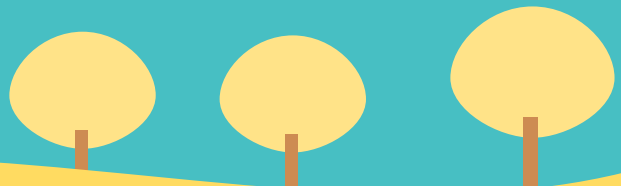
**Monday - Friday
7:30 am - 5:30 pm**



**PERSONAL
PEDIATRIC CARE
...OF PICAYUNE...**

Day Center for Children with Medical Needs

104 Street A, Picayune, MS 39466
769-242-0557 • picayune@ppc-ms.com
www.ppcpicayune.com
 Personal Pediatric Care of Picayune



WHAT WE DO

Personal Pediatric Care is a Prescribed Pediatric Extended Care facility (PPEC), that provides physician ordered multi-disciplinary day care to medically fragile and/or technology-dependent children, infancy to age 21, who have complex medical conditions requiring continual, professional skilled nursing care.

Our focus is to provide maximum early intervention to prepare children with medically complex needs for school and other life situations. We provide care for up to 10 hours a day which includes learning through play and socialization to develop skills needed to ensure proper growth and development.

Upon admission to Personal Pediatric Care, an individualized "plan of care" will be developed for each child specifying the treatment plan necessary to accommodate the medical, nursing, psychosocial, and educational needs of the child as well as the family. Specific goals will be identified and plans for achieving these goals will be determined.

Our skilled pediatric nurses provide constant assessment and needed care of each child which enables our trained staff to recognize and report to your child's pediatrician any abnormal findings in an effort to prevent hospitalizations and future complications.

The parents and families of our patients are given the opportunity to return to work or school while resting assured that their child is receiving the best possible care from qualified pediatric nurses and staff. We give parents "peace of mind" knowing that their child is getting the special care they require.

ADMISSION AND FINANCIAL INFORMATION

A doctor's prescribed order for our services is required. Your child's care may be covered by your insurance if their medical condition requires the skills of a nurse. Our highly skilled staff will assess your child for eligibility and coordinate with your child's physician and insurance case manager to complete the approval process. Personal Pediatric Care accepts Medicaid and Mississippi CAN. **Upon approval, Mississippi Medicaid fully covers the cost of care.*

SERVICES WE PROVIDE

Skilled Pediatric Nursing
Occupational Therapy*
Age-Based Curriculum
Oral/Motor Speech Pathologist*
Educational/Behavioral Consultants*
Child Life Specialist*
Physical Therapy*
Nutritionist*

**As prescribed and/or needed*

